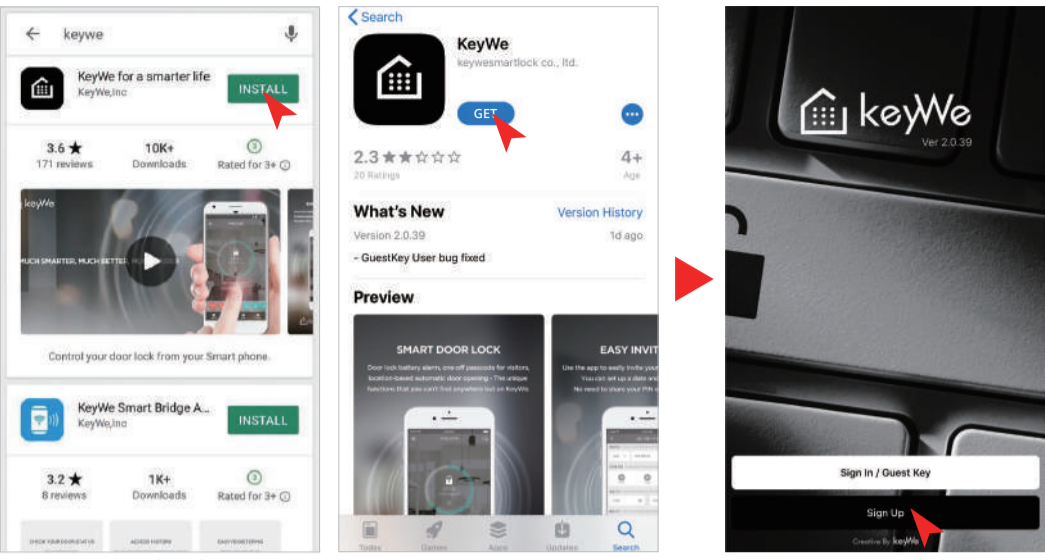


Bluetooth APP GUIDE

Install Mobile App & Sign Up



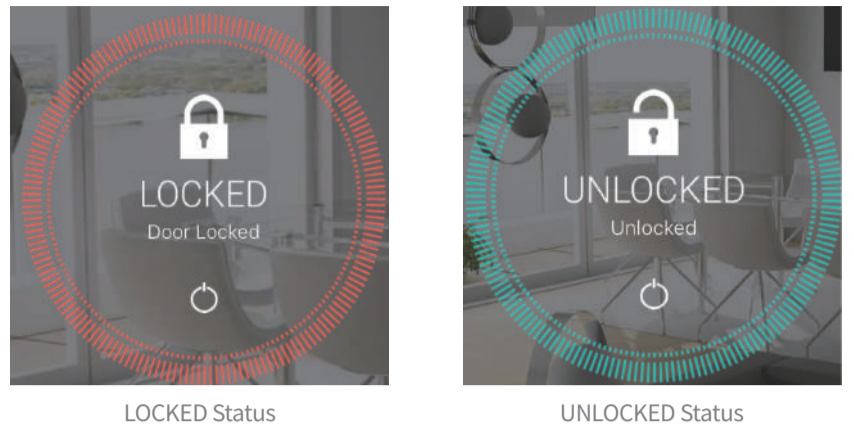
Android iOS

1. Google Play / App Store
Search & install 'KeyWe' or 'KeyWe Doorlock'

2. After running App, sign up
※Only can be used from activated smartphone
(Can not be used from Tablet PC, not activated smartphone)

Door Lock Status Display

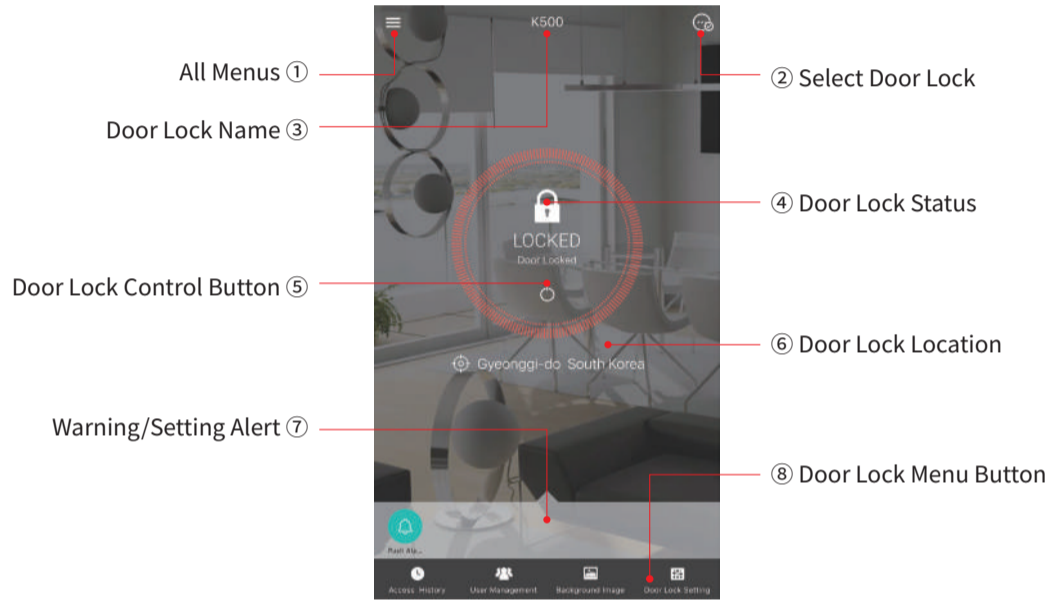
Display LOCK/UNLOCK status and allows to LOCK/UNLOCK of door lock.
When approaching the door lock, the LOCKED/UNLOCKED status is automatically displayed.
And touch the icon to lock or unlock the door lock.



LOCKED Status

UNLOCKED Status

Main Page



All Menus ①

Door Lock Name ③

Door Lock Control Button ⑤

Warning/Setting Alert ⑦

② Select Door Lock

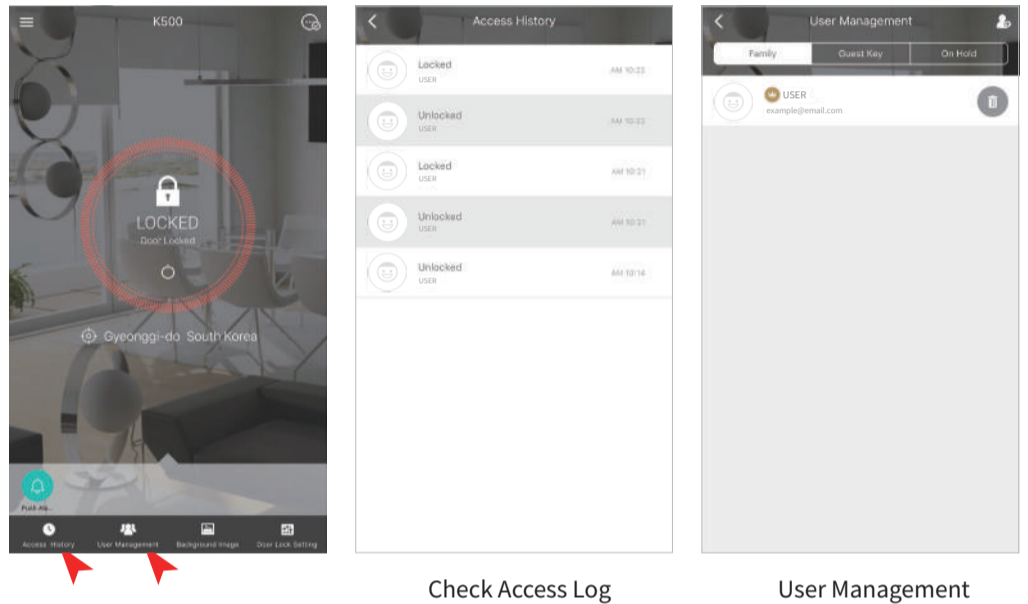
④ Door Lock Status

⑥ Door Lock Location

⑧ Door Lock Menu Button

Access Record & User Management

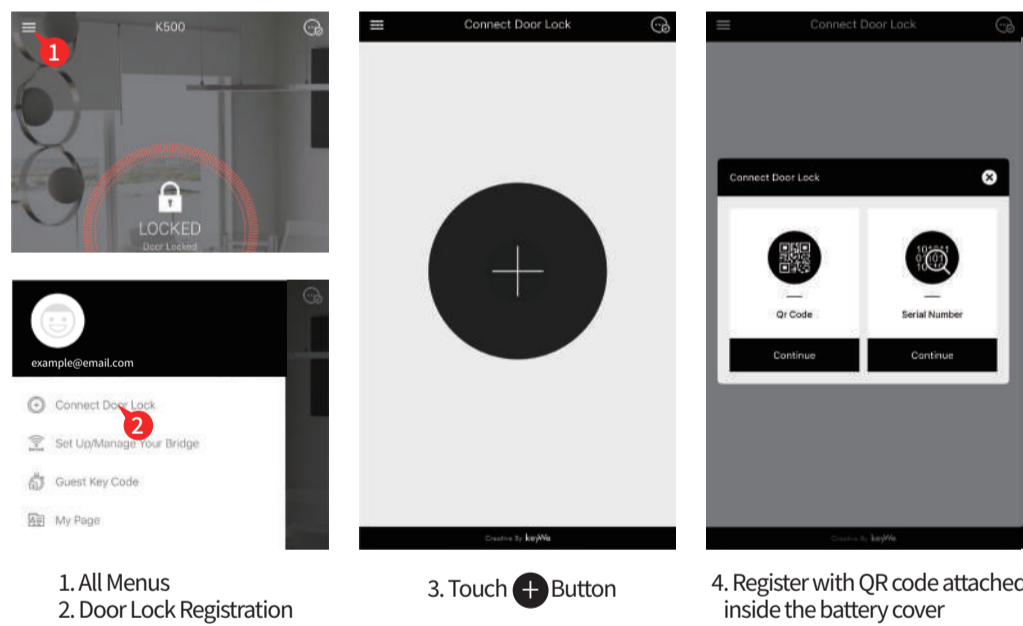
Check and manage access logs for the last 3 months of the door lock.
An administrator can modify or delete a member's permissions.



Check Access Log

User Management

Door Lock Registration



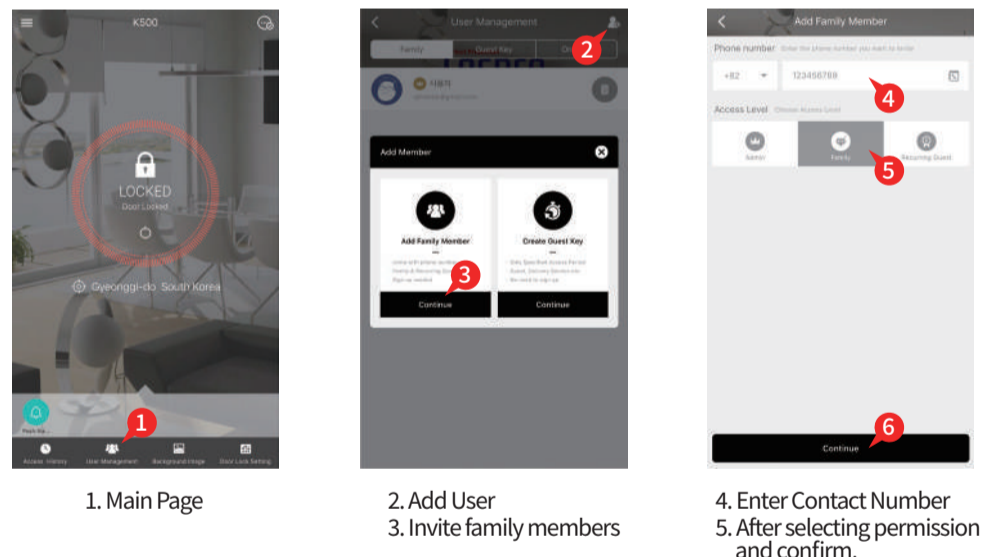
1. All Menus
2. Door Lock Registration

3. Touch + Button

4. Register with QR code attached inside the battery cover

Invite Family Member

It is a function that gives other members ALL or SOME door lock usage rights.
Invite new users by sending a text to a member's contact.



1. Main Page

2. Add User
3. Invite family members

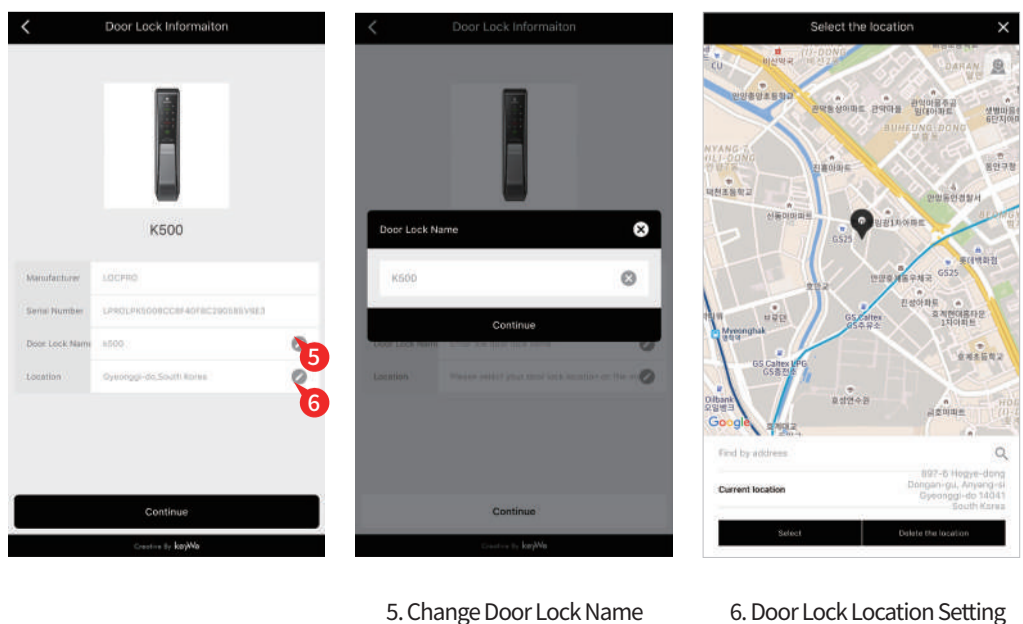
4. Enter Contact Number
5. After selecting permission and confirm.

※Precautions
Only one person register for the first time when registering door lock by QR code scan can register door lock on the smart phone. The first registrant can register as a member through 'Invite Family Member'. Also, if all door lock users delete door lock registration, they can re-register by QR code scan.

※Manager : Invite or delete other members.
Member : Only can open the door at any time. Can not manage other members.
Regular Visitors : Open the door only for a fixed time. Access is allowed only on the date and time designated by the administrator.

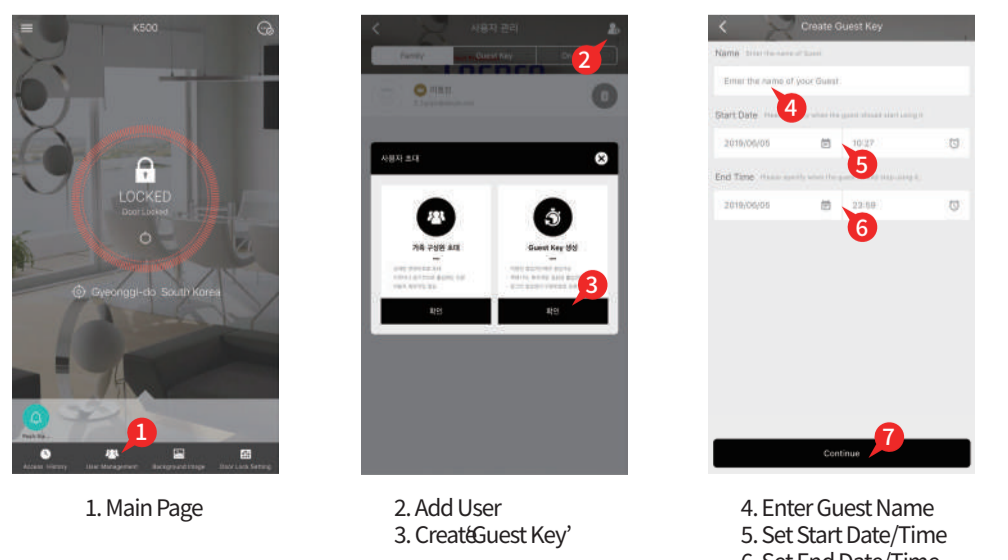
Invite Guest

This function allows guest to temporarily open the door lock on the date, day and time.
A way to invite new guest by sending a text to a new guest's contact number.



5. Change Door Lock Name

6. Door Lock Location Setting

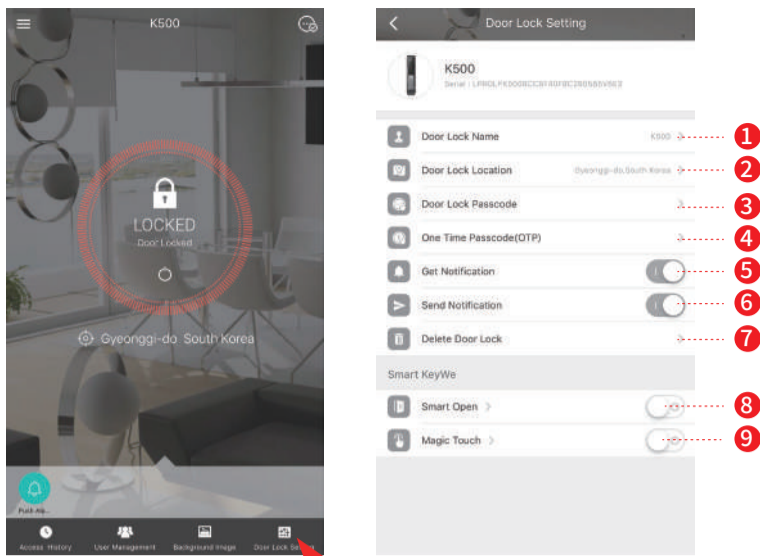


1. Main Page

2. Add User
3. Create Guest Key

4. Enter Guest Name
5. Set Start Date/Time
6. Set End Date/Time

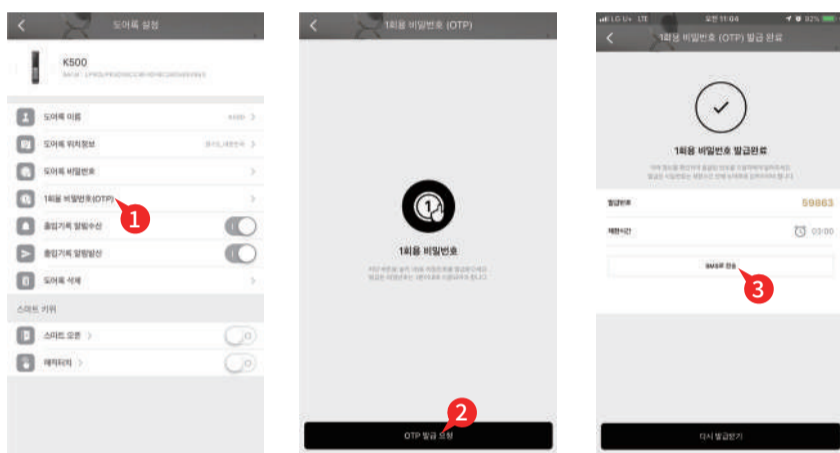
Function Setting



1. Setting Door Lock Name : The name of the door lock is displayed on the right side and the name can be modified.
2. Change Door Lock Location : Door lock location is displayed on the right side and the location information can be modified.
3. Door Lock Password : Password can be modified.

※ Precautions
It can be set only when the door lock and Bluetooth communication is available.

4. One-Time Password (OTP)
It is a function to create one time password for door lock and send it by a text. You can create one-time password from outside. It is useful function for one-time or shot time visitors.(Ex. Housekeeper etc.)

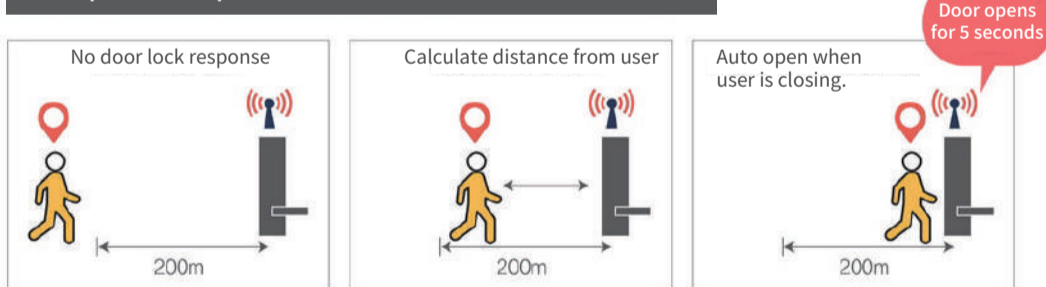


※ Precautions
One-time password will dissipated automatically once visitor use it.. (Time limit : 3 minutes)

5. Receive access log notification : It is a function to receive the member's access record
6. Sending access log notification : It is a function to send your access record to members
7. Delete the door lock : This function is to delete the corresponding door lock from App.
8. Smart open
It is a function to increase convenience by automatically controlling the door lock when the user enters from outside by using smartphone user location information.

- ※ Precautions
- 3G, 4G, 5G, Network & WiFi must be turned on to use smart open function.
 - To use the door lock properly, you should always turn on Bluetooth.
 - Smart open function recognizes the user's come back home pattern and its reliability increases gradually as the use date increases with self learning effect.
 - It works through wireless communication, which may in different results depending on the installation environment and does not guarantee 100% success.

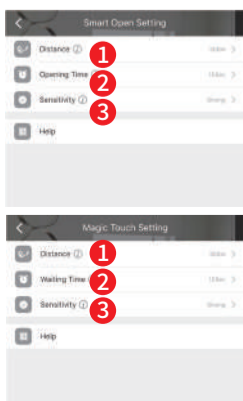
Example. Smart Open. Distance 200m. UNLOCK Time : 5 Seconds



9. Magic Touch
When a registered smartphone in the door lock reaches a certain distance, it is possible to open the door lock with only touch the keypad.

※ Precautions
You can select and use either smart open or magic touch.
If smart open is turn on, magic touch is turned off automatically.

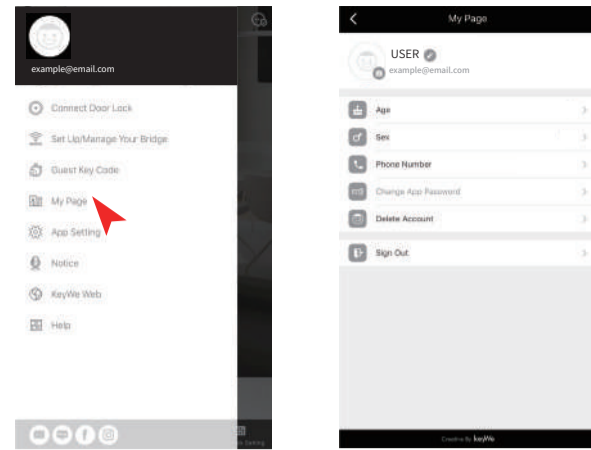
- ※ Setting Smart Open / Magic Touch
Select menu to go to detailed setting screen.



1. Distance Setting
Based on where the door lock is installed(door lock registered location), if you re-enter from setting distance, door lock is detected it and prepare smart open, magic touch function.
2. Waiting Time : It's time to open the door lock after magic touch applied.
3. Operation Sensitivity : Set smart open sensitivity to suit your environment. For example, if the door lock is opened too early and locked before you arrive. You can set the operating sensitivity to be insensitive and open a little later. On the contrary, if the door lock does not open immediately and the opening movement is slow, set it to be sensitive and open more quickly.

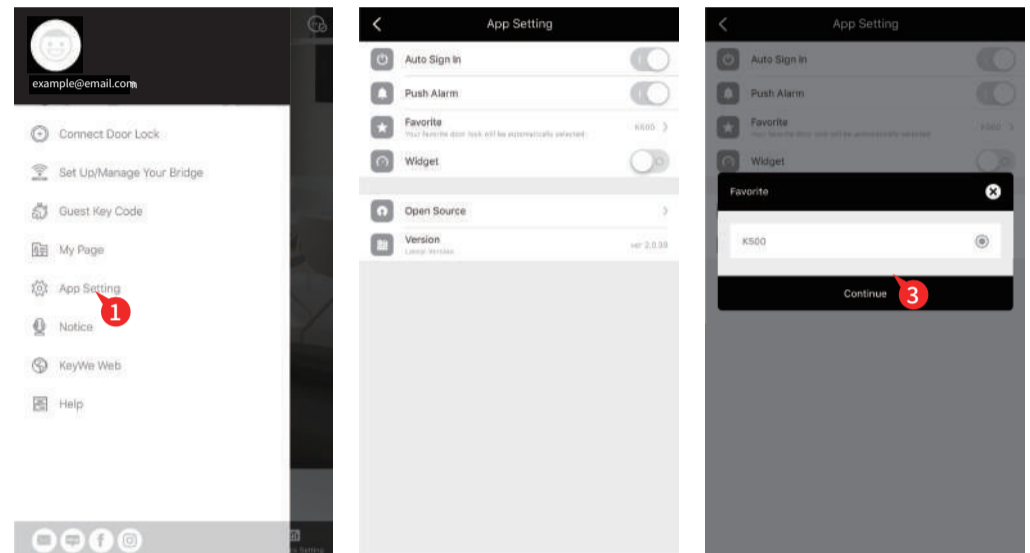
My Page

Touch the All Menus button and touch the My Page button to enter the app user's information.



Register Favorites

You can register your favorite door lock as main. (If multiple door locks are registered and you select the door lock you want, the next time you run the App, the door lock selected will be displayed as main.)



1. All Menus → App Setting

2. Favorites

3. Select Door Lock

Mobile Phone Specifications for Bluetooth App.

To use the App. Properly, your device must meet the following specifications.

1. Android Phone

- With Ver. 4.3(Jelly Bean) or higher
- With Bluetooth 4.0 or higher
- With Android Ver. 4.3 or lower, performance may be limited depending on the mobile phone.
- Ask your dealer if your mobile phone is upgradeable.

2. iPhone

- With ios 8.0 or higher
- With iPhone 5s or higher

3. Common Applications

- Mobile phone that is normally open and used.
- If you can not connect 3G or 4G network, you can not use App. Function properly.
- Set Bluetooth 'ON' to sue the functions properly.